



# Set up School PCs

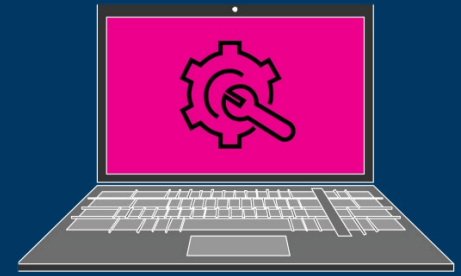
PCs that are always ready to go when a student needs them



Increase & Improve Instructional Time



Simplified Management & Security



## What is it?

Set up School PCs app:

- Joins each student's PC to the school's Office 365<sup>1</sup> and Azure Active Directory<sup>1</sup> tenant.
- Enables the optional Windows Autopilot Reset feature.
- Utilizes Windows Update and maintenance hours to keep student PCs up to date, without interfering with class time.
- Locks down the student PC to prevent activity to prevent distracting activities.
- During setup, if licensed in your tenant, the app enrolls each student PC into a mobile device management (MDM) provider, such as Intune for Education. You can then manage all the settings the app configures through the MDM.

## How does it work?

The free Set Up School PCs app makes it easy to set up Windows 10 PCs with Microsoft's recommended education settings, using a quick USB setup. IT administrators or teachers create a provisioning package on a USB, then distribute the USB to every device. While optimized for shared PCs, it also works great for 1 to 1 deployment. Set Up School PCs is ideal for simpler school Scenarios with little or no IT support.



*Thanks to Intune for Education, I don't have to worry about Apps being placed onto each device. We simply send out the USB drives through the Set up School PCs App and use Intune for Education to check when Apps are deployed.*



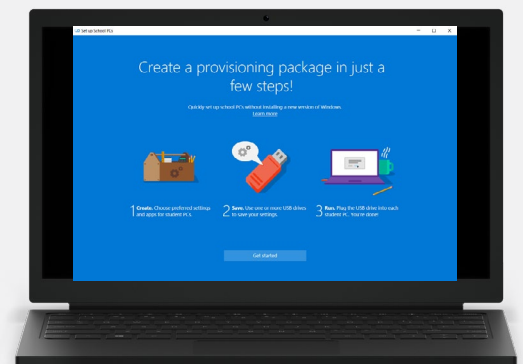
See a comparison of Windows Autopilot v. Set up School PCs

**Joel Parmer**  
Program Coordinator  
Calvert Country School District  
Prince Frederick, Maryland

## Benefits

### Manage your devices with ease

1. Streamline set-up process.
2. Get the right settings.
3. Make device sharing easy.
4. Install important learning apps.





# Set up School PCs

## Benefits



### Streamline set up process

Plug in the pre-configured USB and Set Up School PCs takes care of the rest by quickly setting up and configuring education-recommended apps and settings on student devices. This includes enrolling all devices in the school's Azure Active Directory (AAD) and Intune for Education<sup>1</sup>.



### Get the right settings

Set Up School PCs (SUSPCs) automatically sets devices up with Microsoft's recommended education settings to create a useful learning environment, optimize computer performance, and protect privacy<sup>2</sup>. Any local policies set up by SUSPCs migrate to MDM policies for easy management.



### Make device sharing easy

Devices can be configured with "Shared PC mode" which provides faster sign-in and automatic account cleanup so that students can easily share the same PC.



### Install important learning apps

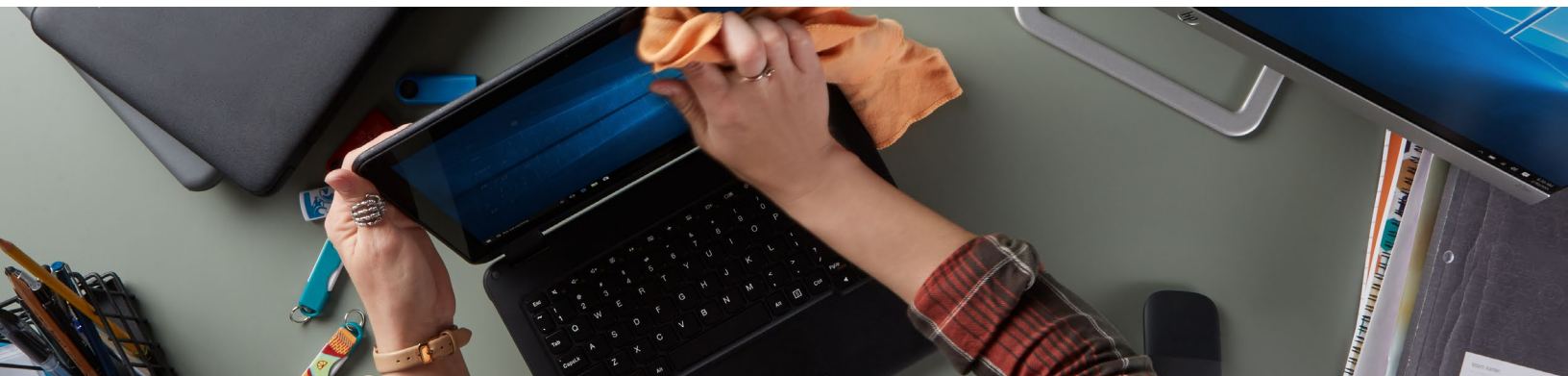
Quickly configure Office 365, Minecraft: Education Edition<sup>3</sup>, Take a Test app so students have the tools they need for learning, including apps directly from the Microsoft Store for Education.



## Scenario<sup>4</sup>

IT Administrator, Bianca Hernandez uses the Set up School PCs app to provision the PCs in his school district whenever he doesn't want to use network bandwidth, has lots of devices to set up, or needs teachers or other staff to help. Creating the provisioning package takes only a few steps. First, he chooses the preferred settings and apps, creates the number of USB drives he needs, and delivers them to the schools. Next, onsite educators

or staff simply plug the USB drives into student devices running Windows 10 Creators Update including future versions. Devices will be ready to use once these settings are applied and ensure the security and connectivity students and educators need to be productive at and away from school. Provisioning used to take weeks, and now, thanks to the Set up Schools PC app, it can be done in less time.



<sup>1</sup> Sold separately.

<sup>2</sup> Visit <https://www.microsoft.com/en-us/TrustCenter/CloudServices/office365/GDPR>

<sup>3</sup> Monthly subscription license required

<sup>4</sup> This is Scenario is an example of how a feature could be used in the classroom.