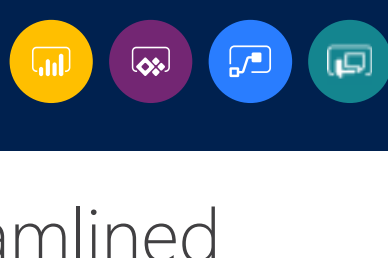




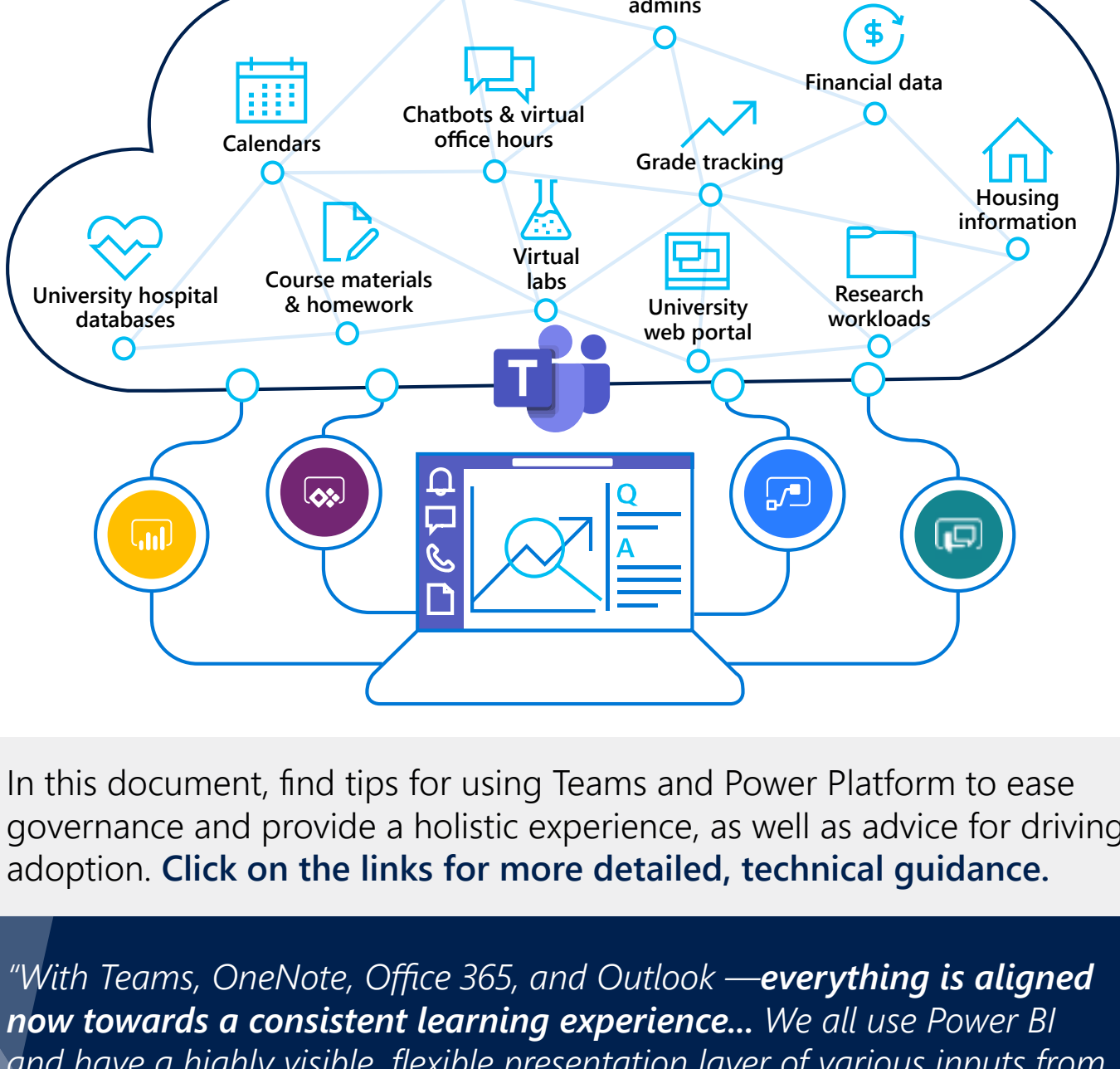
# MAKE THE MOST OF TEAMS AND POWER PLATFORM



## Tips and tricks to create a streamlined digital hub for your institution

Students, faculty, and admins are using a diverse range of technologies and programs, and often there's nothing to **tie it all together**.

The best way to ease your IT burden is to unify these technologies in a central hub. **Teams and Power Platform can do just that.**



In this document, find tips for using Teams and Power Platform to ease governance and provide a holistic experience, as well as advice for driving adoption. **Click on the links for more detailed, technical guidance.**

*"With Teams, OneNote, Office 365, and Outlook —everything is aligned now towards a consistent learning experience... We all use Power BI and have a highly visible, flexible presentation layer of various inputs from our Data Warehouse that we simply didn't have before."*

**Dave Hart**  
Director of ICT,  
[St. Andrew's College](#)

## CREATE A HUB FOR TEAMWORK WITH TEAMS



Teams simplifies your IT support burden by centralizing collaboration in a single pane of glass, enhancing security and streamlining governance.

Challenge	Solution
<b>Identity management</b> All your users, including guests, need the right permissions, and it can be inefficient to manage.	<b>Customize permissions and guest access</b> Teams offers <a href="#">all identity models</a> available with Office 365, as well as multi-factor authentication, and includes <a href="#">comprehensive controls</a> for external and guest access.
<b>Governance</b> What if you end up with issues related to sprawl, bloat, and naming conventions?	<b>Manage naming and expiration</b> As an admin, you can <a href="#">delete and restore users' teams</a> , audit team names, and <a href="#">set expiration policies</a> to automatically clean up unused teams.
<b>Disjointed collaboration</b> Users are split across a range of collaboration tools, increasing cost and limiting IT efficiency.	<b>Give users one collaboration tool</b> Teams brings all your users together on a <a href="#">central collaboration hub</a> in a single pane of glass, simplifying app management and saving time and money for IT.
<b>Third-party apps</b> Users employ a wide array of third-party apps, amplifying the support burden.	<b>Connect to third-party apps with ease</b> Teams gives users access to the third-party apps they need in a more secure and compliant environment through <a href="#">prebuilt connectors, as well as custom connectors</a> .
<b>Security</b> Students, professors, and researchers are all sharing sensitive data, increasing risk.	<b>Enhance security of your users' data</b> Teams has the same <a href="#">security features</a> as the Office 365 suite. Users can access both first- and third-party party apps within the protective layer of Teams.
<b>Data silos</b> Your data lives in various repositories, making it hard to sync it across apps.	<b>Unify your data through School Data Sync</b> <a href="#">Bring together data</a> from your student information system, and automate class team creation and data syncing in Teams, OneNote, Intune, and third-party apps.

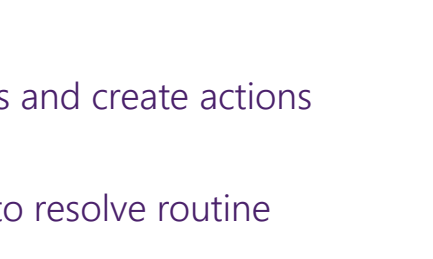
## Drive adoption

- Start with early adopters outside the classroom**  
You don't have to roll out Teams all at once. Start with [initial teams and channels](#) for faculty or student government. If you are switching from Slack, [migrate data](#).
- Make Teams the go-to tool for text, audio, and video chat**  
As more of your users begin using Teams, monitor their feedback, and access the admin center to [view usage analytics](#).
- End your deployment journey in the classroom**  
Once your users are comfortable with Teams, introduce it as an in-class resource—including as a great tool for [capturing lectures](#) and sharing course materials.

*"Teams has become the central access point, much like a dashboard or landing page. We continue to use OneNote, SharePoint, etc., but now via Teams... Teams replaces part of the usual student/educator relationship with the unique, broader, but also more flexible notion of collaborator."*

**Michel Girard**  
Pedagogical Director and Teacher,  
[Centre Universitaire Catholique de Bourgogne](#)

## STREAMLINE WORKFLOWS WITH POWER PLATFORM



With Teams as a single pane of glass for collaboration, Power Platform allows you to automate backend processes and provide low-to-no-code apps, flows, and bots that integrate with Teams and save time for both you and your users.

- **With Power BI**, visualize real-time analytics to empower informed, confident decision-making
- **With Power Apps**, streamline institutional processes with custom low-code apps that solve challenges
- **With Power Automate**, automate repetitive processes and create actions with AI, boosting productivity across your institution
- **With Power Virtual Agents**, build no-code chatbots to resolve routine issues quickly

Challenge	Solution
<b>Compliance</b> Adhering to compliance is a repetitive process that can take too much of your time.	<b>Streamline compliance policies</b> <a href="#">Create flows to automate compliance</a> , set conditional access to data assets, and maintain control of it all through the <a href="#">admin center</a> and admin portals.
<b>Lack of visibility</b> It can be difficult to maintain visibility into the changes your users are making.	<b>Track user activity across all services</b> Access the <a href="#">Office 365 Security &amp; Compliance Center</a> to maintain <a href="#">visibility into user activity</a> , including creation and deletion of apps and flows.
<b>Lack of control</b> What if your users create apps or flows that cause problems for others?	<b>Control user activity</b> Power Platform provides administrative controls to directly monitor and manage users' apps and flows or restrict <a href="#">which environments your users can access</a> .
<b>Technical tasks</b> You spend time supporting your users on tasks they don't have the expertise for.	<b>Simplify technical processes</b> Your users can <a href="#">create no-code flows</a> and apps to automate processes, or you can build these assets for them, saving both you and your users time in the long run.
<b>Back-end complexity</b> Your users need help with administrative tasks, including paper processes.	<b>Automate back-end processes</b> Power Platform allows you to <a href="#">digitize paper processes</a> and other back-end procedures so that your users can spend less time on administrative tasks.
<b>Data and app silos</b> Your information and assets live in a decentralized range of locations.	<b>Store assets in the same environments</b> <a href="#">Create environments</a> to house apps, flows, and bots, storing all your data in a central location called the <a href="#">Common Data Service (CDS)</a> .

## Drive adoption

- Let early adopters innovate within guardrails**  
[Environments come in various types](#), so you can create test environments for early adoption. You can limit connectors, restrict CDS access, and maintain control over apps and flows as your users learn.
- Provide user training**  
Give users technical training, relying on [extensive pre-existing documentation](#) and partnering with a [Microsoft Gold-certified partner](#) for further assistance.
- Depend on the Power Platform community**  
The [Power Platform community](#) consists of groups and forums dedicated to innovation, problem-solving, and helping you through the adoption process.

*"Previously, more than 80% of [analysts'] time was spent on routine extractions and integration of the same data and from the same systems. Now, they can refocus their time on finding new insights, building new reports, and engaging with users across the university to explain their work and conclusions."*

**Matt Gordon**  
Associate Director of Data and Analytics,  
[King's College London](#)

## OVERCOME CHALLENGES ACROSS YOUR INSTITUTION

Bring together diverse solutions	Automate & digitize back-end processes	Centralize data across your campus
<b>Classroom</b> "I'm now able to reach over 99% course satisfaction. The experience is multi-modal... it's accessible, and it's tailored to the specific needs of every individual student."  Dr. David Kellerman Senior Lecturer <a href="#">University of New South Wales</a>	<b>Research</b> "Teams as it is, out of the box, solves the problem of how to collaborate in academic research better than anything I've seen before."  Graham Collins Research Computing Analyst <a href="#">Newcastle University</a>	<b>Administration</b> "Power BI makes information more relatable to a user who doesn't have much experience... The data is there with just the click of a button or a glance at a dashboard."  Steven Bjerken Administrator <a href="#">Gonzaga University</a>

Click on any of the universities' names to read more.

## Get started

**Teams**  
[Teams for Education Quick Start](#)  
[Technical Documentation](#)

**Power Platform**  
[Technical Documentation](#)