

logitech

SOLUTIONS FOR BUSINESS: TEAM WORKSPACE



THE NEW TEAM WORKSPACE

In an enterprise landscape with in-office, hybrid, and remote workers, productive team collaboration is challenging. Logitech's team workspace solutions provide an enterprise-grade ecosystem of hardware, software, and services to simplify collaboration for your teams, regardless of location.

Our innovative solutions improve meeting experiences while enabling IT to simplify and speed device deployment and support. Logitech team workspace solutions are designed for all your people, spaces, and needs.

COMPLETE HYBRID WORKSPACE SOLUTIONS

Everything you need to equip your team workspaces for productive collaboration.

SOFTWARE

Logitech software enhances the manageability and updates the experiences of our products, so IT can better deploy team workspaces.

CollabOS	3
Logitech Sync	3
Logitech Tune	3

SERVICES

With comprehensive service plans and extended warranties, our solutions will do the job right, or we will make it right.

Logitech Select	4
Extended Warranty	4

HARDWARE

Logitech has an extensive product suite to improve collaboration in the hybrid workspace.

Conference Cameras and Video Bars	5
Cameras and Room Add-Ons	6
Touch Controllers	8
Compute	8
Accessories	8



SOFTWARE

Unlock the full potential of your workforce and workspace with Logitech software solutions. Our software simplifies device management and empowers employees to stay productive from anywhere with advanced device control, innovative device intelligence, and real-time insights. Logitech software helps you get more out of your video collaboration devices, save time for IT, and make meetings easier for employees.



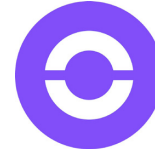
CollabOS

The unifying operating system running on select Logitech video collaboration devices, enabling device features and partner platform integrations.



Sync

The remote workspace management software supporting video conferencing device management. Sync also provides device and room insights and desk booking management.



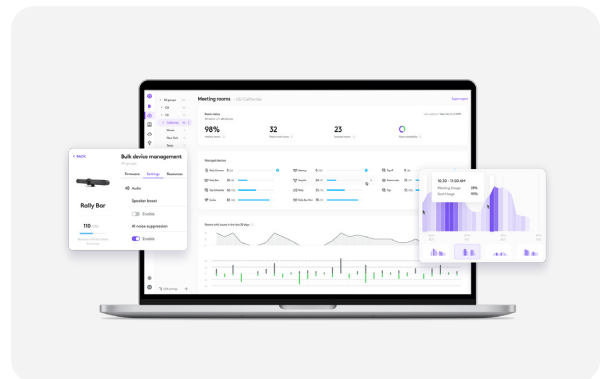
Tune

The end-user software that shows personal device status and enables employees to customize select peripherals. Tune is also the interface for end-user desk booking.

Simplify your workspace management

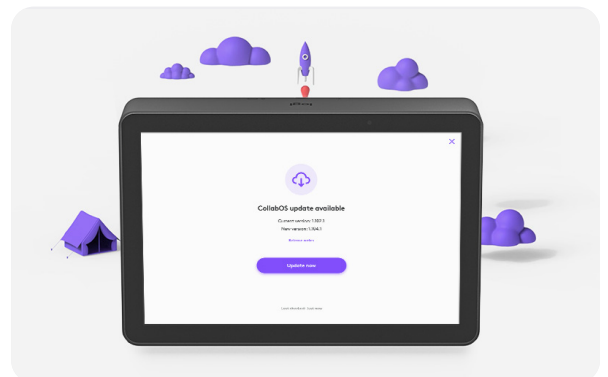
Reduce the time and effort needed to set up and manage devices for conference rooms, homes, and hotdesks.

- Simplified provisioning
- Controlled update validation and cascading
- Device monitoring
- Hotdesking



Get the best out of what you have

Watch your devices get smarter through regular updates that add advanced features, enable compatibility with partners like Zoom, Microsoft Teams, and Google, and unlock integration with other Logitech devices.



SERVICES

Ensure your video collaboration solutions are always ready and operational when your teams need them. Logitech services help to increase uptime and reduce the burden on IT.

LOGITECH SELECT

Logitech Select is a comprehensive service plan that delivers reliability, continuity, and peace of mind for the enterprise. Rest easy knowing you have access to ultra-responsive 24/7 support, a designated Service Manager¹ for focused technical assistance, onsite spares¹ and accelerated RMAs for up to five years. Logitech Select also includes advanced Logitech Sync features as powerful insights on device and room usage and alerts directly to your inbox via ServiceNow².

¹ Available with purchase of a service plan for 50+ rooms.

² Available for users of Logitech Sync.



EXTENDED WARRANTY

With an extended warranty,³ your Logitech purchases are protected against defects for up to five years from the purchase date. Extended warranties are available for either one year or three years beyond the original Logitech manufacturer's limited two-year warranty.

³ Terms and conditions apply. Not available in all countries. Contact your reseller.



Refer to [Logitech.com](https://www.logitech.com) for product details including part numbers and specifications.

CONFERENCE CAMERAS AND VIDEO BARS

Logitech's conference cameras and video bars help create a more equitable team workspace with high-quality video and audio that makes it feel like your whole team is in the room, even when half of them work from home. Our trusted video collaboration solutions are compatible with popular platforms like Google Meet™, Microsoft Teams®, and Zoom™.



RALLY BAR

Logitech's premier, all-in-one video bar for medium and large rooms. Brilliant optics, powerful audio, and remarkable simplicity set a new standard for video collaboration. Deploy in USB or appliance mode.



RALLY BAR MINI

Simplicity meets versatility with Rally Bar Mini, Logitech's most advanced all-in-one video bar for small and medium rooms. Deploy in USB or appliance mode.



RALLY BAR HUDDLE

Logitech's premium all-in-one video bar for huddle rooms and small meeting rooms. Rally Bar Huddle is designed to deliver equitable video conferencing meetings with ease. Deploy in USB or appliance mode.



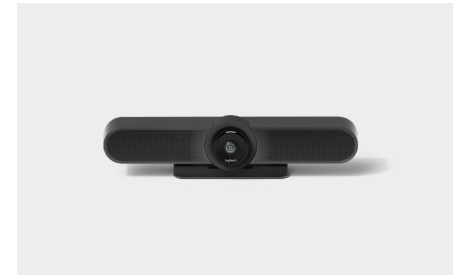
SIGHT

Working in tandem with Rally Bar or Rally Bar Mini, Sight gives each remote participant their own seat at the table. Powered by AI, Sight automatically identifies and frames speakers for a better remote experience.



RALLY PLUS

Power meets flexibility with Rally Plus, Logitech's video conferencing system for extra-large rooms. Rally Plus features an ultra-HD PTZ camera, modular audio, and AI-driven performance. Expandable up to seven mic pods for even greater coverage.



MEETUP

MeetUp is a plug-and-play conference camera for small meeting rooms, featuring an ultra-wide lens with motorized pan and tilt and up to 5X zoom in a compact, easy-to-install form factor.

CAMERAS AND ROOM ADD-ONS

Meeting rooms come in different sizes and serve different needs. Our add-on products are designed to enhance the productivity and equity of your hybrid meetings.



RALLY CAMERA

Rally Camera is a premium standalone USB camera that delivers brilliantly sharp video at resolutions up to 4K, perfect for medium to large meeting spaces. Rally can be used with third-party solutions or as a secondary camera in larger team workspaces and auditoriums.

SCRIBE

Whiteboard Camera

Effortlessly share whiteboards into video meetings with Logitech Scribe, an AI-powered whiteboard camera. With built-in AI and a custom lens, Scribe broadcasts whiteboard content into video meetings with outstanding clarity. Easily start sharing with the wireless button or the Tap touch controller.



SCRIBE ACCESSORIES

With these accessories, the Scribe whiteboard camera simplifies whiteboard sharing in any space.



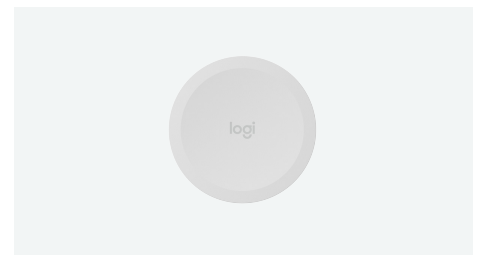
SCRIBE GLASS MOUNT

Mount Scribe on glass surfaces.



POLARIZER FOR SCRIBE

Polarizing filter to reduce glare in environments with bright lighting.



SHARE BUTTON

Scribe button in white. Purple button is included with Scribe.

CAMERAS AND ROOM ADD-ONS



ROOMMATE

Dedicated Meeting Room Compute

This compute was purpose-built for video collaboration. RoomMate runs CollabOS, which allows you to easily deploy Microsoft Teams Rooms on Android™, Zoom Rooms Appliances, and other leading video conferencing platforms. RoomMate can connect to multiple displays, both in conference rooms and even around the office for digital signage.*

*Digital signage capabilities vary by partner.

COMPUTE ACCESSORIES

Choose the right mount for your team workspace compute.



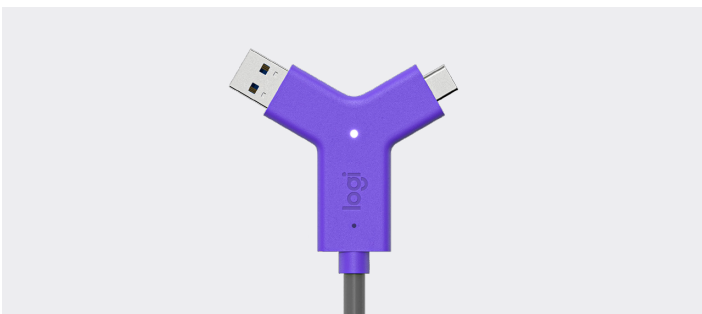
COMPUTE MOUNT

Mounting bracket with cable retention for RoomMate and other video conferencing compute devices.



PC MOUNT

Mount with cable retention for mini PCs and Chromeboxes.



SWYTCH

Plug-and-Display Laptop Link

Logitech Swytch offers a one cable laptop link to a room's conference camera and display, making it easy for teams to meet, present, and stream over any service.

TOUCH CONTROLLERS AND COMPUTE

Deliver one-touch join, calendar integration, easy content-sharing, and a consistent experience across all rooms.



LOGITECH TAP IP

The Tap IP touch controller uses a single Power over Ethernet connection for one-touch join and easy content-sharing. Clean cabling and multiple mounting options ensure a professional install. Included with room solutions that use IP-connected touch controllers.



LOGITECH TAP

The Tap touch controller delivers one-touch join and easy content-sharing with clean cabling and multiple mounting options for a professional install. Included with room solutions that use USB-connected touch controllers.



TAP SCHEDULER

This purpose-built scheduling panel for meeting spaces indicates availability and displays meeting details. Claim the space for ad hoc meetings, or schedule sessions. Cable management and included mounts allow for a professional install and fast deployment.

TAP ACCESSORIES

Simplify cable management and mount the Tap touch controller in the most convenient location.



WALL MOUNT FOR TAP

Space-saving wall mount with cable management for Tap and Tap room touch controllers.



TABLE MOUNT FOR TAP

Swiveling table mount with cable management for Tap and Tap IP touch controllers.



RISER MOUNT FOR TAP

Elevated table mount with swivel and cable management for Tap and Tap IP touch controllers.



CAT5E KIT FOR TAP

Cabling kit to supply USB data and power to Tap for cleaner and simpler cable routing.



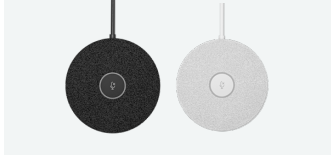
TAP SCHEDULER ANGLE MOUNT

Ideal for lower height placements or angled viewing. Adds 14-degree angle to the device's mounting bracket.

ACCESSORIES

ACCESSORIES FOR CONFERENCE CAMERAS AND VIDEO BARS

Accessories for Rally Bar, Rally Bar Mini, Rally, and MeetUp that offer modular flexibility, so you can equip any team workspace with the solutions to help make meetings more equitable.



RALLY MIC POD

Modular microphones with RightSound for Rally Bar Mini, Rally Bar, and Rally.



MIC POD MOUNT

Rally Mic Pod mount for tables and ceilings.



MIC POD PENDANT MOUNT

Rally Mic Pod Mount for rooms with tall ceilings.



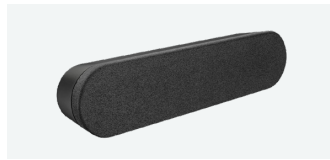
RALLY MIC POD HUB

Customize mic placement for any conference table configuration.



RALLY MIC POD EXTENSION CABLE

10 m (32.8 ft) extension cable for Rally Mic Pod.



RALLY SPEAKER

Second speaker connects to Logitech Rally for clear, rich sound.



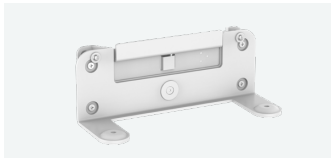
EXPANSION MIC FOR MEETUP

Add-on microphone with mute control for extended audio range.



MEETUP MIC EXTENSION CABLE

10 m (32.8 ft) extension cable for Expansion Mic.



WALL MOUNT FOR VIDEO BARS

VESA-compatible mounting kit for Rally Bar and Rally Bar Mini.



TV MOUNT FOR VIDEO BARS

Attach any Rally Bar to almost any display with VESA mounting points.



RALLY MOUNT KIT

Custom mounts for a sleek installation and secure cabling.



TV MOUNT FOR MEETUP

Mounting option for MeetUp.

COMPARE OUR SOFTWARE AND SERVICE PLANS

STANDARD

Streamline your device management with simple provisioning, controlled updating, advanced management, and flexible monitoring, all within the Sync application.

SYNC PLUS

Take control of your workspace. With Logitech devices, you'll gain access to powerful analytics that provide deeper insights into your meeting room, allowing you to make informed decisions based on real-time data.

SELECT

Ensure that your video collaboration solutions will always be ready and operational when your teams need them. Our comprehensive service for enterprises offers ultra-responsive 24/7 support, product replacement, accelerated RMA, and onsite spares (for 50+ rooms) to ensure uptime and business-class performance.

	Standard	Sync Plus	Select
Software			
Device Monitoring	✓	✓	✓
Device Configuration and Settings	✓	✓	✓
Device Updates	✓	✓	✓
Room & Device Inventory	✓	✓	✓
Group Settings, Updating, and Rebooting	✓	✓	✓
Personal Device Inventory	✓	✓	✓
Personal Device Firmware Updates*	✓	✓	✓
Computer Inventory	✓	✓	✓
Email Alerts		✓	✓
ServiceNow Integration		✓	✓
Insights & Analytics		✓	✓
Service			
Help Desk	Business hours phone and email support		24/7 phone and email support within 1 hour
One-Click Help Requests via Sync			✓
Product Replacement	2-year standard warranty. Standard ground shipping.		Up to 5 years. One business day expedited delivery.
Instant RMA OnSite Spares			✓
Designated Service Manager			✓

*Firmware updates not available on all personal devices

WHAT SETS US APART

WHAT SETS US APART

For more than four decades, Logitech products have directly improved how people work. As a technology company that users are familiar and comfortable with, we continue to harness innovation so everyone can better communicate, collaborate, and create. Our goal is to remove barriers that impede human flourishing by designing products so intuitive the underlying technology disappears.



GLOBAL REACH

Our brands include Logitech, Logi G, ASTRO Gaming, Streamlabs, Ultimate Ears, Jaybird, and Blue Microphones. With offerings available in over 100 countries, our products are marketed through a network of distributors, retailers, merchandisers, value-added resellers, and system integrators. This enables us to fulfill orders quickly and efficiently and optimize our supply chain to ensure products are available when and where they are needed most. We also provide localized support, including multilingual services, to customers around the world.

INTUITIVE DESIGNS

Logitech products are designed to be intuitive for all users, regardless of ability or familiarity with the technology. We prioritize accessibility and strive to create products that can be used from the desktop to the meeting space and beyond. Our solutions easily integrate into existing technology stacks, are simple to deploy and manage, and are configurable to meet the needs of changing work styles and platforms.

SUSTAINABILITY

We understand that with a global footprint comes a commensurate commitment to sustainability, demonstrated in product lifecycles that include transitioning to circular materials, reducing waste, and extending the life of products, components, and materials. We are among the first electronics companies to place detailed carbon impact labels on our products, with a commitment to do this across our entire portfolio. We design for sustainability, use renewable energy to prioritize carbon reduction, and address any residual emissions with high-quality certified offsets and carbon removals.

ELEVATE YOUR TEAM WORKSPACES

Contact your Logitech Account Rep for more information.

[Logitech.com/business/team-workspace](https://www.logitech.com/business/team-workspace)