

logitech®

VIDEO COLLABORATION  
**SOLUTIONS**



# VIDEO COLLABORATION FOR THE HYBRID WORKFORCE

Logitech® supports hybrid work with video collaboration solutions that create equitable meeting experiences for everyone, regardless of location. We help teams work better together without compromising on quality, productivity, or the creativity that comes from collaboration.

## VIDEO BARS AND CONFERENCE CAMS



**RALLY BAR AND RALLY BAR MINI** are Logitech's premier, all-in-one video bars for small to mid-sized meeting rooms. Brilliant optics, powerful audio, and remarkable simplicity set a new standard for video collaboration. Deploy in USB or appliance mode.



**RALLY PLUS AND RALLY CAMERA** deliver brilliantly sharp video at resolutions up to 4K. The Rally Camera can be used with third-party solutions or as a secondary camera. Rally Plus extends the reach of the Rally Camera with two speakers and mics, perfect for medium to large spaces.

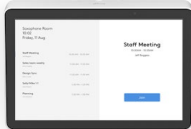


**MEETUP** is a plug-and-play conference camera for small meeting rooms, featuring an ultra-wide lens with motorized pan and tilt, and up to 5x zoom in a compact, easy-to-install form factor.

## TOUCH CONTROLLERS AND SCHEDULING PANELS



**TAP IP**  
Tap IP is an easy-to-set-up meeting room touch controller that delivers one-touch join and easy content sharing. Included with room solutions that use IP-connected touch controllers.



**TAP**  
Tap is an easy-to-set-up meeting room touch controller that delivers one-touch join and easy content sharing.

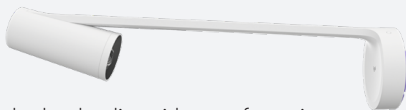


**TAP SCHEDULER**  
Tap scheduler is a purpose-built scheduling panel for meeting spaces. Indicates availability from a distance and displays meeting details up close.

## ROOM SOLUTION ENHANCEMENTS

### SCRIBE

Effortlessly share whiteboards during video meetings with Logitech Scribe, an AI-powered whiteboard camera for Microsoft Teams Rooms, Zoom Rooms, and other leading video conferencing services. With built-in AI and a custom lens, Scribe broadcasts whiteboard content with outstanding clarity. Scribe's wireless share button enables one-push sharing. You can also easily initiate sharing with your Tap touch controller.



### SWYTCH

Connect to any video conferencing platform on your laptop with Logitech Swytch, even if you've standardized room solutions like Microsoft Teams Rooms and Zoom Rooms. With Swytch, the room's AV equipment can be used with any video meeting, webinar, or streaming application: just launch the software on a laptop and connect with Swytch. With its universal USB Type A + C connector neatly docked on the table, Swytch eliminates the multiple cables, adapter rings, and reset procedures that confuse users and generate trouble tickets.

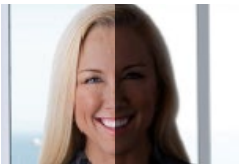


## RIGHTSENSE TECHNOLOGIES



### RIGHTSIGHT

Finds human silhouettes within the camera's field of view and automatically pans, tilts, and zooms to comfortably frame everyone in the room.



### RIGHTLIGHT

Optimizes light balance and color to prioritize the appearance of faces and render natural-looking skin tones, even in dim or backlit conditions.



### RIGHTSOUND

Improves voice clarity by suppressing background noise and echo, auto-leveling voices, and focusing on the active talker so that everyone can be heard.

- Logitech room solutions are preconfigured for meeting rooms of virtually any size and layout
- Compatible with leading video collaboration services

 Certified for  
**Microsoft Teams**

 **Google Meet**

 **zoom**

# PERSONAL COLLABORATION FOR REMOTE EMPLOYEES

Meeting participants, in the conference room or working remotely, need to look and sound their best.

Logitech personal collaboration solutions turn any work area into an instant collaboration space—providing outstanding audio and video quality, minimizing distractions, and allowing you to manage how you present yourself.

## DESKTOP ORGANIZATION



### LOGI DOCK

Logi Dock is an all-in-one docking station with meeting controls and a built-in speakerphone that works seamlessly with leading video conferencing services. Designed for personal workspaces, private offices, and focus rooms, Logi Dock makes joining meetings as easy as one touch while delivering crystal-clear audio for calls and music. It's simple to set up, connects your desktop peripherals, and eliminates workspace clutter.

## WEBCAMS



### BRIO

Premium 4K webcam with HDR and Windows® Hello support. Packed with innovative technology, features 5x HD zoom, variable field of view (90°, 78°, 65°), and dual stereo mics.



### C930e

An advanced 1080p business webcam that delivers high-resolution video in virtually any environment and H.264 support. The C930e webcam features 4x HD zoom, 90° field of view, and dual stereo mics.



### C925e

Enhanced 1080p business webcam with HD autofocus for true-to-life clarity. The C925e delivers professional quality video for all-day use, with H.264 support, 78° field of view, and dual stereo mics.



### C920e

Look professional from anywhere with this 1080p business webcam that's easy to use and perfect for mass deployment. The C920e webcam features 78° field of view and dual stereo mics.

## AUDIO



### ZONE TRUE WIRELESS

Bluetooth® earbuds that provide outstanding audio quality while keeping out unwanted noise with advanced beamforming technology and adaptive hybrid ANC.



### ZONE WIRELESS (PLUS)

Bluetooth® headset designed to help you work from anywhere with exceptional sound, flip-to-mute mic, and Qi wireless charging. ANC reduces distractions in noisy workspaces. Seamlessly switch between your smartphone and computer for music and calls. Zone Wireless Plus includes a Logitech Unifying + Audio receiver, which can connect up to six Logitech Unifying wireless peripherals.



### ZONE WIRED

USB wired headset that delivers premium audio for focus time and reliable call clarity with noise-canceling dual mic technology. Generously sized 40mm drivers deliver full-bodied bass to create satisfying sound for video calls and music.



### ZONE WIRED EARBUDS

Wired earbuds with noise-canceling, boomless dual mic technology that captures voice in complete clarity. Always stay connected with convenient plug-and-play connections: 3.5 mm, USB-C, and USB-A.



### LOGI TUNE

Let people take charge of the video meeting experience wherever they are—at home, in the office, or on the go. With Logi Tune, webcam and headset settings are simple to customize. Plus, joining video meetings is easier than ever with calendar and Logi Dock integration.





## VIDEO COLLABORATION SOFTWARE AND SERVICES



### SYNC SOFTWARE

As the size of your video deployment grows, so does the number of devices you need to manage. Sync works alongside your service provider admin tool to help you build and maintain dependable video deployment for your organization.



### SELECT SERVICE PLAN

Logitech Select is a comprehensive service plan that ensures your video collaboration solutions are always ready and operational when your teams need them, with business-class service from a vendor you know and trust. Select offers 24/7 support, a dedicated Customer Success Manager, accelerated RMA, onsite service, and advanced Sync analytics.



### VIDEO COLLABORATION EXTENDED WARRANTY

Purchasing an extended warranty\* provides peace of mind in knowing your Logitech video collaboration room systems and devices are protected against defects for up to five years from the purchase date. Extended warranties are available for either one year or three years beyond the original Logitech two-year warranty.

\* Terms and conditions apply. Not available in all countries. Contact your reseller.

**logitech**

[www.logitech.com/vc](http://www.logitech.com/vc)

© 2021 Logitech. All rights reserved. Logitech, the Logitech logo and other Logitech marks are owned by Logitech and may be registered. All other trademarks are the property of their respective owners. Logitech assumes no responsibility for any errors that may appear in this publication. Product, pricing and feature information contained herein is subject to change without notice.

