



# DEVICE REFRESH PARTNER PLAYBOOK





## TABLE OF CONTENTS

Introduction .....	Page 3
Windows 11 Pro Resources .....	Page 4
HP Resources.....	Page 6
Lenovo Resources .....	Page 8
AMD Resources .....	Page 10
Windows Autopilot .....	Page 15
D&H AIM Solutions Architecture.....	Page 17



## INTRODUCTION

Windows 10 is reaching End-of-Support in October of 2025. Although that may seem like a long runway, now is the perfect time to discuss refreshing your clients' device fleet. If they're still operating on outdated devices, they could be sacrificing a whole lot more than a few minor OS improvements.

## OPERATING ON OUTDATED DEVICES



Slower performance



Poor battery performance



Higher security risk



Disjointed Collaboration



Cannot use latest Microsoft solutions



Poor imagery/display

To help you start this conversation with your clients, D&H has assembled this exclusive toolkit for our partners, filled with information and resources so you can be your clients' **device refresh expert!**

### CONTACT A DEVICE SALES SPECIALIST TO GET STARTED!



**Microsoft Specialist**  
MicrosoftSpecialist@dandh.com



**HP Specialist**  
HPI@dandh.com



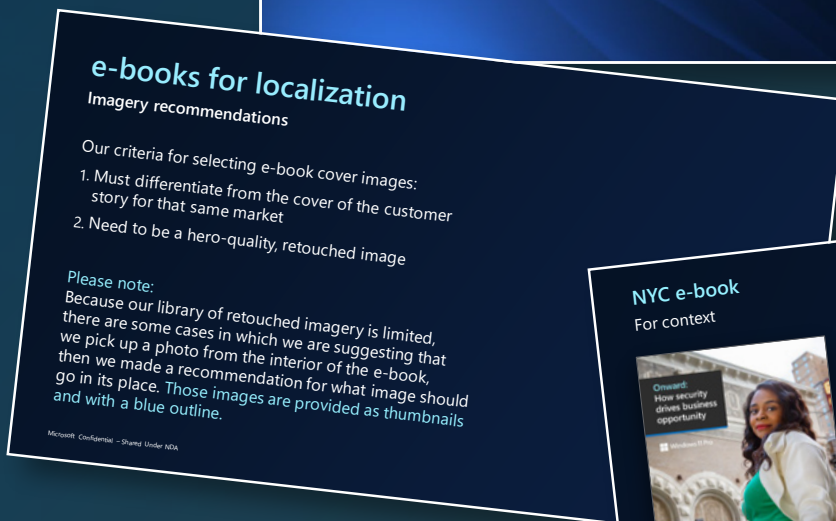
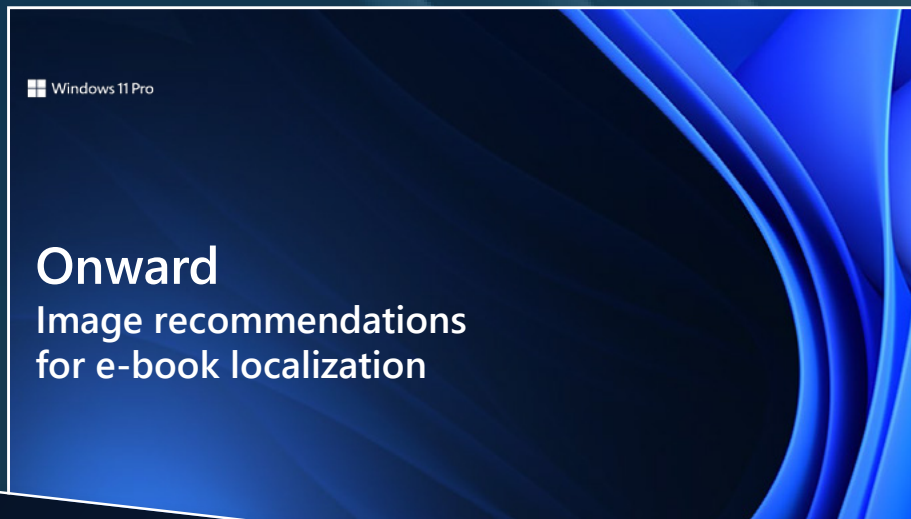
**Lenovo Specialist**  
LenovoSpecialist@dandh.com



**AMD Specialist**  
AskAMD@dandh.com



# DOWNLOAD YOUR WINDOWS 11 PRO BRANDING GUIDE





Microsoft



Windows 11

# DOWNLOAD YOUR 2024 SMB DEVICE REFRESH GUIDEBOOK

**Gartner recommends companies move to Windows 11**

Q: Is it time to move to Windows 11?  
A: Yes

In December 2022, Gartner published a study authored by Stephen Kleynhans that said I&O managers should roll out the latest version of Windows 11 (Windows 11 22H2) instead of Windows 10 as part of their annual Windows feature update processes.

The reasons for this are listed in the full report.  
<https://aka.ms/MoveToWindows11>

"The release of the Windows 11 Update 2022 H2 signals that it's time for enterprises to include Windows 11 in their annual update processes."  
Gartner

**Gartner**

**Windows Pro device is the gateway to MORE**

\$1 Microsoft Revenue + Autopilot Intune + Microsoft 365 + Azure cross-sell = 7X MS Services-led Partner Economic Value = \$7.63

**Microsoft Share of Wallet**

Business growth rate	Gross margin
8%	53%
17%	56%
32%	64%
63%	78%

Co-marketing alignment, Targeted marketing incentives

**Windows 11 Security features**

Every component of the Windows 11 technology stack, from Chip to Cloud, is designed to ensure ultimate security

**New**

- Applications safeguards—Smart App Control
- Enhanced phishing protection
- Configuration lock for Secured-core PCs
- Presence sensing
- Secured kernel (HVCI enabled by default)

**Existing and improved**

- Security by default
- Remote deployment and compliance
- BitLocker and BitLocker-to-Go
- Windows Hello for Business
- Multifactor authentication
- Windows Information Protection
- Windows Defender System Guard
- Windows Defender Antivirus

Visit the Windows 11 Security website to receive detailed security information, the Windows 11 Security guidebook

# Why you should choose HP

How end-to-end capabilities, protection, and possibilities tip the scales



[Browse Now](#)

The business world is in constant change. People are working from anywhere. Innovations are accelerating. And it's hard for IT, especially in smaller companies, to keep pace. It helps to have a resource who can bring all the pieces together.

That's exactly what HP can do for you.

## Everything working seamlessly together

An IT infrastructure built around a comprehensive, unified HP ecosystem is more efficient and cost-effective. It also makes everything easier to manage. With HP, you don't need a massive IT team to capitalize on having a single source for building, protecting, and managing a fleet that can support your workforce's ongoing needs.



A wide range of powerful PCs with the right devices to support all your distributed workforce needs



Advanced cameras, audio, and conferencing solutions so even remote workers feel fully connected



Advanced device management with predictive analytics and insights to maximize performance<sup>1,2</sup>



Built-in zero-trust endpoint security protection that starts at the hardware level<sup>3</sup>



Leading integrated technology and software like AMD Ryzen™ PRO processors and Windows 11 Pro



Contact a D&H HP Specialist Now!

[HPI@dandh.com](mailto:HPI@dandh.com)



# What your people need in a flexible work world

How HP helps you meet everyone's differing needs



HP recommends Windows 11 Pro for business



Unrivaled business PC solution

[Browse Now](#)

Alyssa from HR is starting one of her in-office days. Robert, a videographer, is editing in his home office and will head to the field for more footage in the afternoon. Oscar, a business development executive, is joining an online meeting from an airport boarding area.

If you're in IT today, these could very well be your people. And most in IT—especially those who must wear many hats for their company—are struggling to meet the diverse needs of such workers.

## What each type of worker needs...



### Create a place to excel

From private offices to flex desks, on-site spaces must make it easy for any worker to set up.



### Bring collaboration into perfect focus

Equip workers for Microsoft Teams meetings with notebooks with AI noise reduction that deliver crystal-clear sound—even when a screaming toddler or a leaf blower is nearby.



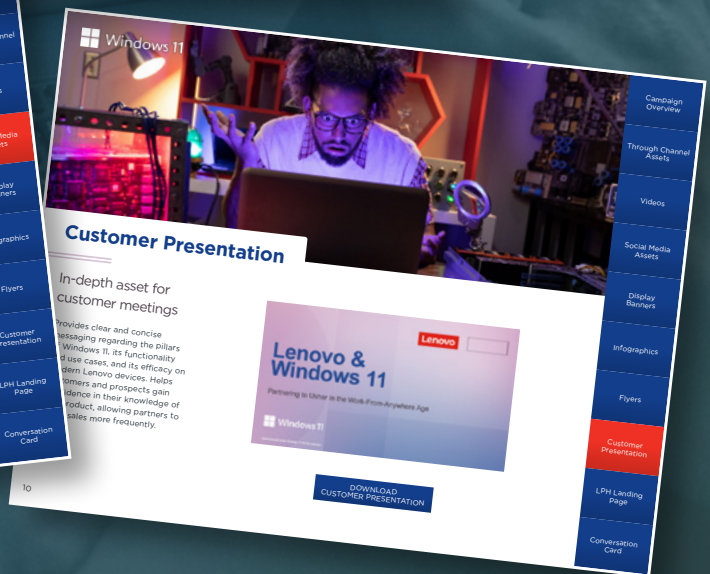
### Turn any place into a workspace

Ensure on-the-go workers have a lightweight notebook with adaptable configurations like a touchscreen, two top-edge microphones, and extra-long battery life.



# Lenovo

## DOWNLOAD YOUR LENOVO THAT'S AN 11 CAMPAIGN PLAYBOOK!



Lenovo

Contact a D&H Lenovo Specialist Now!

[LenovoSpecialist@dandh.com](mailto:LenovoSpecialist@dandh.com)



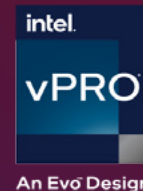
# Empower Your Team to Do More

## With modern Lenovo devices powered by Windows 11 Pro for business

It's time to get behind commercial solutions that improve productivity, offer easy management for IT, and help you retain employees. With reliable performance, rock solid security, and cutting-edge new features, Windows 11 Pro for business is designed for hybrid work for deployment across all teams—whether hybrid, remote, or on-premises.



Lenovo



### Work from Anywhere Security, Right Out of the Box

Windows 11 is Zero Trust ready with default security settings including hardware-based isolation, encryption, and malware prevention. Lenovo ThinkShield offers additional protection—from chip to cloud on laptops and 2-in-1s, like **ThinkPad X1 Yoga Gen 7**, engineered to work from anywhere.



### Productivity, Versatility, and Collaboration

Windows 11 on modern Lenovo devices—like **ThinkBook 13s Gen 4** which features all-day battery power—improves productivity and collaboration. Intel® Unison™ enables seamless content sharing across operating systems by connecting laptops and iPhone or Android devices.



### Simplicity & Low Total Cost of Ownership

Windows Autopilot and Microsoft Intune enable zero-touch deployment of remote work devices like **ThinkBook 15 Gen 4**. Remote help offers secure, real-time support through the cloud.



## Lenovo Recommends Windows 11 Pro for Business

### Ready to learn more?

Contact your Lenovo Business Partner today to talk about making your work from anywhere team unstoppable.



Only available on eligible Intel® Evo™ designs with Intel® Unison™ software on Windows-based PCs and only pairs with Android- or iOS-based phones; all devices must run a supported OS version. See [intel.com/performance-evo](https://intel.com/performance-evo) for details, including set-up requirements. Results may vary. © Intel Corporation



# DOWNLOAD YOUR AMD RYZEN™ PRO MANAGEABILITY INFOGRAPHIC!



AMD  
together we advance.

## REMOTE CLOUD MANAGEABILITY: HOW AMD PRO MANAGEABILITY CAN IMPROVE DAY-TO-DAY IT OPERATIONS

Remote cloud manageability with the AMD Ryzen™ PRO 7040 Series processors helps improve day-to-day IT operations with improved efficiency, increased visibility, and reduced frustration.

### THE PAIN POINT PROBLEM

IT expertise is in demand, but teams are often understaffed and overworked. This creates pain points, including:



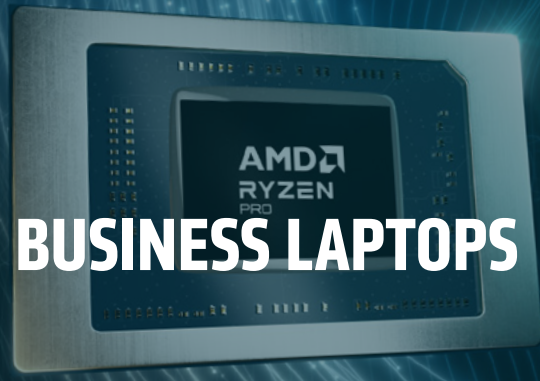
### IMPROVING IT OPERATIONS WITH AMD PRO MANAGEABILITY

AMD PRO manageability – which comes standard with the AMD Ryzen™ PRO 7040 Series processors – can improve day-to-day IT operations with:



Contact a D&H AMD Specialist Now!

AskAMD@dandh.com



# THE FUTURE OF WINDOWS BUSINESS LAPTOPS STARTS WITH AMD RYZEN™ AI

## GENERATIVE AI APPLICATIONS AND USAGE ARE ON THE RISE

New AI copilots are unlocking transformative benefits for developers, business processes, and information synthesis through conversational search.

### EXAMPLES

- |                    |              |
|--------------------|--------------|
| Microsoft Co-Pilot | Grammarly    |
| Chat GPT           | Jasper       |
| Bard AI            | Articleforge |
| and many more...   |              |

### BENEFITS

- REINVENTING PRODUCTIVITY** of Laptop Users
- REMOVE THE DRUDGERY** From our Daily Tasks and Jobs
- LAPTOPS WILL HELP US THINK, PLAN, AND ACT** In the New Era of Work
- REDISCOVER THE JOY OF CREATION** By Freeing Business Users

AMD RYZEN™ AI AIMS TO DELIVER SUCH AI EXPERIENCES ON THE LAPTOP WITH INCREDIBLE BATTERY LIFE, SPEED, AND QUIET OPERATION

## GENERATIVE AI TRAINING AND INFERENCE - TODAY AND IN THE FUTURE

### TODAY



Running Inference in the Cloud

Very High Costs that Can Be Unsustainable for Scaling

### FUTURE

- Speed
- Privacy
- Security



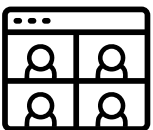
- Personalization and Low Latency

Processing On the PC Will Play a Big Role in The Hybrid AI World

HYBRID AI IS CRITICAL FOR GENERATIVE AI TO SCALE – AND PC WOULD PLAY A BIG ROLE

## RYZEN™ AI IN THE HYBRID AI ERA REVOLUTIONIZES THE PC EXPERIENCE

### ADVANCED COLLABORATION



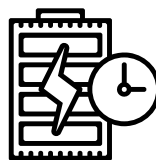
ALL NEW AI DRIVEN COLLABORATION ADVANTAGES

### ACCELERATED MULTITASKING



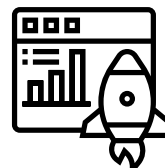
UNBURDEN CPU AND GPU AND UNLOCK ITS POTENTIAL

### IMPROVED EFFICIENCY



OPTIMIZED FOR BATTERY LIFE WITH ALL NEW AI EXPERIENCES

### INCREASED PRODUCTIVITY



ACCESS TO NEXT-GEN ACCELERATED WORKLOADS

### ENHANCED SECURITY



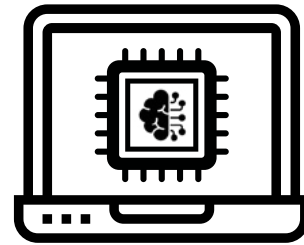
LOCAL PROCESSING OF DATA MEANS FEWER ATTACK VECTORS



# RYZEN™ AI AT A GLANCE

- ✓ World's first integrated AI engine in an x86 processor<sup>1</sup>
- ✓ Optimized to run AI workloads for incredible system efficiency
- ✓ Up to 4 concurrent AI streams for real-time multi-tasking
- ✓ Processes up to 10 Trillion AI Operations Per Second (TOPS)
- ✓ Allows business PC users to experience on-device AI everyday

## INTEGRATED INTO THE CPU FOR OPTIMAL EFFICIENCY



CPU + GPU + RYZEN™ AI

## JOURNEY STARTS HERE WITH ADVANCED VIDEO COLLABORATION

### WINDOWS STUDIO EFFECTS USES AMD RYZEN™ AI USING THE INTEGRATED CAMERA



Eye Contact Correction



Standard/Portrait Blur



Auto Framing



### WORKS ON ALL VIDEO CONFERENCING APPLICATIONS



"If you're doing a Zoom call for work and you want to use eye contact, you're looking at well less than half the power enabled by AMD Ryzen™ AI"

- [PCWorld](#)

## LEADERSHIP MULTITASKING WITH RYZEN™ AI

With 8 high-performance cores and AMD Ryzen™ AI, AMD Ryzen™ PRO 7040 series processors accelerate performance using MS Office apps while running Teams conference with all Windows Studio AI effects turned on.



UP TO

**83% FASTER<sup>2</sup>**

(AMD Ryzen™ 7 PRO 7840U compared to Qualcomm SQ3 processor)



Teams Video Conference with Windows Studio AI Experiences



MS Office Apps

EQUIP YOURSELF WITH AMD RYZEN™ AI POWERED PCs AS YOU DELVE INTO THE WORLD OF FORTHCOMING WINDOWS AI APPLICATIONS.

VISIT [AMD.COM/PARTNER](https://www.amd.com/partner) Your source for tools, training, news, reviews, and much more!

To find out more about AMD Ryzen™ PRO Processors, please visit [www.AMD.com/pro](https://www.amd.com/pro)

1. As of May 2023, AMD has the first and only available dedicated AI engine on an x86 Windows processor, where 'dedicated AI engine' is defined as an AI engine that has no function other than to process AI inference models and is part of the x86 processor die. For detail information, please check: <https://www.amd.com/en/products/ryzen-ai>. **PHX-3**.  
2. Testing as of 6/23/23, by AMD Performance Labs using the following benchmark tests: Procyon Overall, Procyon Word, Procyon Excel, Procyon PowerPoint, each while running a simulated 9-person (3-3) Microsoft Teams video conference call with utilizing system configuration for AMD Ryzen 7 7840U @15W TDP. MAVAN FP7-101DRCINT-230331 (CRB), 16GB RAM, 1TB NVMe SSD, Integrated Radeon Graphics, Windows 11 Pro running in "high-performance mode" with Advanced Background Blur, eye gaze detection (using a mannequin to simulate the feature) and auto framing enabled via Ryzen AI. System configuration for Qualcomm SQ3 processor: Microsoft Surface Pro 9, 16GB RAM, 512GB NVMe SSD, Qualcomm integrated graphics, Windows 11 Pro running in "best performance mode", and Advanced Background Blur, eye gaze detection (using a mannequin to simulate the feature) and auto framing enabled via Qualcomm integrated NPU (Neural Processing Unit). System configurations may vary yielding different results. **PHUP-3B**



# AMD RYZEN™ PRO 7040U SERIES PROCESSORS

PROCESSOR UPSSELL GUIDE (AMD RYZEN™ 5 PRO 7540U TO RYZEN™ 7 PRO 7840U)

## POWERING THE BEST AMD BUSINESS PCs IN THE WORLD

Both AMD Ryzen™ 5 PRO 7540U and Ryzen™ 7 PRO 7840U processors are considered the world's most advanced processors with unparalleled power efficiency for premium business laptops offering leadership performance, unmatched battery life and efficiency.



"Zen 4"

World's Fastest and Most Advanced Business Processor

See endnote: PHXP-37, GD-203



4nm

Incredible power efficiency for business laptop processor



AMD RDNA™ 3

World's most powerful integrated graphics

See endnote: PHXP-37

DESIGNED FOR UNCOMPROMISING INNOVATION, SPEED, AND POWER

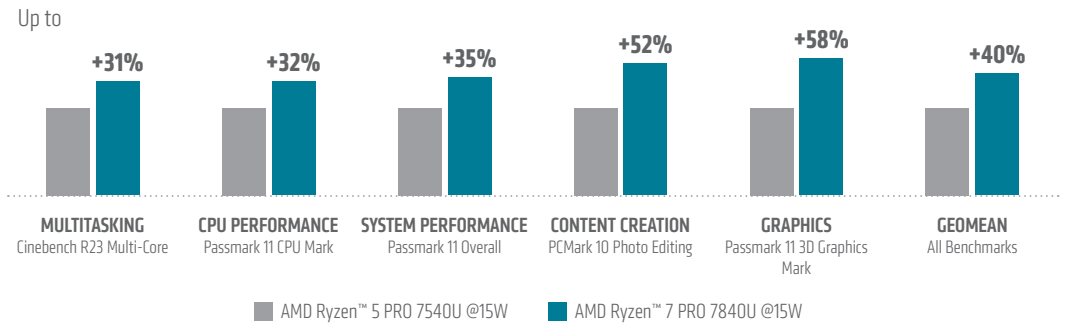
## UPGRADE FROM RYZEN™ 5 TO RYZEN™ 7 FOR ABSOLUTE POWERHOUSE PERFORMANCE

### UPGRADE TO RYZEN™ 7 FOR FASTER PERFORMANCE IN PREMIUM BUSINESS LAPTOPS

- Both with superior "Zen 4" architecture
- Upgrade from 6 to 8 high performance cores
- Upgrade from up to 4.9GHz to up to 5.1GHz
- Upgrade from 22MB to 24MB total cache

See endnote: GD-150

### PROCESSOR AND SYSTEM PERFORMANCE

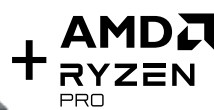


See endnote: PHXP-67

## UPGRADE FROM RYZEN™ 5 TO RYZEN™ 7 FOR LEADING BATTERY LIFE AND POWER EFFICIENCY

Up to **22%** BETTER BATTERY LIFE FOR MICROSOFT TEAMS CONFERRING

When comparing the AMD Ryzen™ 5 PRO 7540U and the AMD Ryzen™ 7 PRO 7840U processor



See endnote: PHXP-68

### BOTH DESIGNED FOR POWER EFFICIENCY

When running typical office productivity applications users can expect to consume:

Up to **36% LESS POWER**

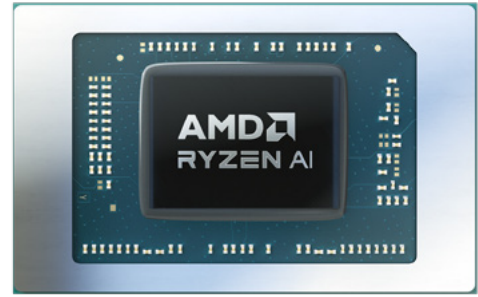
When comparing the AMD Ryzen™ 5 PRO 7540U and the AMD Ryzen™ 7 PRO 7840U processor

See endnote: PHXP-69

## INTRODUCING AMD RYZEN™ AI

WORLD'S FIRST INTEGRATED AI ENGINE IN AN X86 PROCESSOR

- ✓ **Optimized AI workloads** for incredible system efficiency
- ✓ Up to **4 concurrent AI streams** for real-time multi-tasking
- ✓ Processes up to **10 trillion AI Operations Per Second**
- ✓ Experience **on-device AI** every day on business laptops



See endnote: PHX-3, PHXP-57

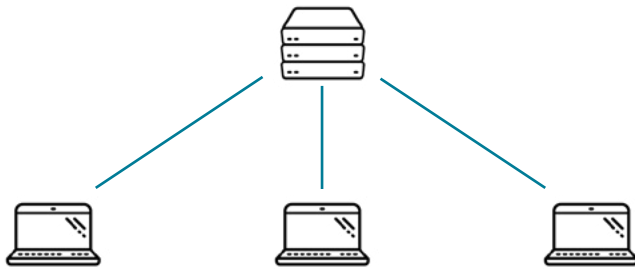
## BOTH RYZEN™ 5 AND RYZEN™ 7 DELIVER INCREDIBLY MODERN SECURITY FEATURES

### AMD PRO TECHNOLOGIES

A complete set of features that are essential to modern business. SMBs, enterprise businesses, IT admins, and general office workers can take advantage of cutting-edge security features, robust manageability tools, and enterprise-grade stability and reliability as part of AMD PRO technologies.

#### AMD PRO SECURITY:

Provides innovative layers of defense at the silicon, OS, and platform levels to give IT teams comprehensive security features for the entire system



See endnote: GD-206, GD-72

- OEM SECURITY FEATURES
- WINDOWS® 11 SECURITY **Secured-Core PC Hardware Enforced Stack Protection**
- AMD MEMORY GUARD **Microsoft Pluton Security**
- AMD SECURE PROCESSOR **FIPS 140-3 Level 1 and Level 2\* Certification**
- AMD "ZEN 3" ARCHITECTURE **AMD Shadow Stack**
- YOUR DATA

\* FIPS 140-3 implementation under test

#### AMD SECURE PROCESSOR:

Dedicated security processor that validates code before it is executed to help ensure data and application integrity

#### AMD PRO BUSINESS READY:

Provides a robust manageability feature set that simplifies deployment, imaging, and management of an ever-growing and changing fleet.

**18**  
MONTHS  
planned software stability

**24**  
MONTHS  
planned availability

**ENTERPRISE GRADE**  
quality assurance stability

## AMD RYZEN™ PRO 7040 SERIES PROCESSORS (7540U VS 7840U)

AMD RYZEN™ PRO	PERFORMANCE CORES	PROCESS	INTEGRATED AI ENGINE	TOTAL CACHE SIZE	TDP	AMD PRO TECHNOLOGIES
AMD Ryzen™ 7 PRO 7840U	8P	4nm	✓	24 MB	15 - 28 W	✓
AMD Ryzen™ 5 PRO 7540U	6P	4nm		22 MB	15 - 28 W	✓

VISIT [AMD.COM/PARTNER](https://www.amd.com/partner) Your source for tools, training, news, reviews, and much more!

1. Testing as of 6/13/23, by BDX Technologies, commissioned by AMD, utilizing an HP EliteBook 845 G10 with Ryzen PRO 7840U processor @15W, Integrated Radeon Graphics, 16GB RAM, 1TB NVMe SSD, Windows 11 Pro, versus a similarly configured Dell Latitude 5440 with an Intel Core i7-1365U processor @15W, Intel Integrated graphics, 512GB NVMe SSD, Windows 11 Pro. Using an average composite geometric mean of the scores measured in the following benchmark tests: CPU - Geobench v5 Single Core, Cinebench R23 i7-thread and Passmark 11 CPU Mark; GPU - 3DMark Fire Strike Extreme Graphics, 3DMark Night Raid Graphics, Productivity - PCMark 10 Express, PCMark 10 Extended, PCMark 10 Productivity Test Group; Content Creation - SPECviewperf 3dmax-06, Procyon Video Editing, and PCMark 10 Photo Editing. PC manufacturers may vary configurations yielding different results. Results may vary. PHXP-57

2. Based on a smaller node size of the AMD processor for an x86 platform, as of August 2022. GD-203. RYZEN 7000 SERIES PRO mobile. Based on a smaller node size of the AMD processor for a business-class x86 platform, as of April 2023. GD-203

3. Boost Clock Frequency is the maximum frequency achievable on the CPU running a bursty workload. Boost clock achievability, frequency, and sustainability will vary based on several factors, including but not limited to: thermal conditions and variation in applications and workloads. GD-150

4. Testing as of 11/27/23 by BDX Technologies, commissioned by AMD, utilizing an HP EliteBook 845 G10 with Ryzen 5 PRO 7540U processor, Integrated Radeon Graphics, 32GB RAM, 256GB NVMe SSD, Windows 11 Pro and an HP EliteBook 845 G10 with Ryzen 7 PRO 7840U processor, Integrated Radeon Graphics, 32GB RAM, 512GB NVMe SSD, Windows 11 Pro Using the following tests: Cinebench R23 i7, Passmark 11 CPU Mark, Passmark 11 Overall, PCMark 10 Photo Editing, Passmark 11 3D Graphics Mark, and a GEOMEAN score of all the benchmarks above. The composite geometric mean score is an average which indicates the typical value of the benchmark results. PC manufacturers may vary configurations yielding different results. Results may vary. PHXP-67

5. Based on internal testing by AMD as of 11/27/23. Battery life results evaluated by operation of a nine-participant Microsoft Teams video conference on battery. System configuration for AMD systems run from power level 100% > 5% @15W/brightness and power mode set to "power efficiency." System configuration for Ryzen™ 5 7540U: HP EliteBook 845 G10, AMD Radeon Graphics, 32GB RAM, 256GB NVMe SSD, Windows 11 Pro and 51Wh battery. System configuration for Ryzen™ 7 7840U: HP EliteBook 845 G10, AMD Radeon Graphics, 32GB RAM, 512GB NVMe SSD, Windows 11 Pro and 51Wh battery. Battery life will vary based on a variety of factors. PHXP-68

6. Testing as of 11/27/23 by AMD internal performance lab. System configuration for AMD Ryzen PRO 7840U: HP EliteBook 845 G10, 32GB RAM, 512GB NVMe SSD, Integrated Radeon graphics, Windows 11 Pro running in Power Efficiency mode. System configuration for AMD Ryzen 5 PRO 7540U: HP EliteBook 845 G10, 32GB RAM, 512GB NVMe SSD, Integrated Radeon graphics, Windows 11 Pro running in Power Efficiency mode using the following tests: Microsoft Teams + Procyon wall power consumed (watts). Each Microsoft Teams call consists of 9 participants (3x3) while running the UL Procyon Overall benchmark. Laptop manufacturers may vary configurations yielding different results. PHXP-69

7. As of August 2022, select Ryzen™ 7040 processors for mobile with dedicated AI hardware are the only x86 PC processors with dedicated AI hardware. PHX-3

8. Based on testing by AMD Engineering as of 10/24/23, on a test system configured with an AMD Ryzen(tm) 7 7840U processor with Ryzen(tm) AI enabled, Radeon(tm) 780M Graphics, 16GB RAM, and Windows 11 Pro to measure response time impact on individual AI applications when running AMD internal AI models of Depth Estimation, Eye Gaze Correction, Super Resolution, Scene Detection sequentially and at the same time. PC manufacturers may vary configurations, yielding different results. Performance may vary based on use of latest drivers. PHXP-57

9. Ryzen™ AI is defined as the combination of a dedicated AI engine, AMD Radeon™ graphics engine, and Ryzen processor cores that enable AI capabilities. OEM and ISV enablement is required, and certain AI features may not yet be optimized for Ryzen AI processors. Ryzen AI is compatible with all AMD Ryzen 7040 series processors except the Ryzen 5 7540U and Ryzen 3 7440U. Please check with your system manufacturer for feature availability prior to purchase. GD-220a

10. Full system memory encryption with AMD Memory Guard is included in AMD Ryzen PRO, AMD Ryzen Threadripper PRO, and AMD Athlon PRO processors. Requires OEM enablement. Check with the system manufacturer prior to purchase. GD-206

11. Microsoft Pluton is a technology owned by Microsoft and licensed to AMD. Microsoft Pluton is a registered trademark of Microsoft Corporation in the United States and/or other countries. Learn more at <https://www.microsoft.com/security/blog/2020/11/17/meet-the-microsoft-pluton-processor-the-security-chip-designed-for-the-future-of-windows-pcs/>. Microsoft Pluton security processor requires OEM enablement. Check with the OEM before purchase. AMD has not verified the third-party claim. GD-202

12. The AMD Secure Processor is a dedicated on-chip security processor integrated within each system-on-a-chip (SoC) and ASIC (Application Specific Integrated Circuit) designed by AMD. It enables secure boot with root of trust anchored in hardware, initializes the SoC through a secure boot flow, and establishes an isolated Trusted Execution Environment. GD-72

\*Zen 4 is a codename only and not an AMD product name. ©2023 Advanced Micro Devices, Inc.

All rights reserved. AMD, the AMD Arrow logo, and combinations thereof are trademarks of Advanced Micro Devices, Inc. Other names are for informational purposes only and may be trademarks of their respective owners. Dec 2023. PID# 232403907



# Create a better out-of-the-box experience for your customers with Windows Autopilot

Simplify the way devices get deployed, reset, and repurposed, with an experience that is zero touch for your clients and adds margin to your Windows 11 Pro and Enterprise device sales.



## Why Windows Autopilot?

- Perceptions about the time-intensive nature of Windows device deployment may inhibit some customers from moving to new Windows 11 Pro and Enterprise devices. Modernizing deployment with Windows Autopilot helps address that concern.
- With Windows Autopilot, a partner can optimize user features, settings, and apps for the customer without ever touching the device.
- Windows Autopilot also simplifies ongoing device management, including reset, recovering, re-purposing, and end-of-life disposal.



## Why should resellers embrace Windows Autopilot?

- Grow Windows 11 Pro device sales through faster device refresh.
- Build profitable, scalable device deployment and management offerings.
- Cross-sell/up-sell Microsoft cloud services, e.g., EMS and Microsoft 365.
- Generate higher customer satisfaction, retention, and lifetime value.

Windows 11 Pro is also still available! Get started with Windows Autopilot at D&H today for whichever OS meets the needs of your business. Contact [ProServices@dandh.com](mailto:ProServices@dandh.com) for more information.

**Get started with Windows Autopilot at D&H today!**

Contact [ProServices@dandh.com](mailto:ProServices@dandh.com) for more information.

# How does Windows Autopilot work with D&H?

When you add Windows Autopilot services to your Windows 11 Pro and Enterprise device purchases, we unbox the device, capture the required data, and link it to the appropriate end user tenant and profile via Microsoft Partner Center before it ever ships! When your clients unbox the device and connect to the Internet, Windows Autopilot takes care of the rest by transferring their personalized settings, apps, and data to them in just minutes.

Even better, D&H does not require a device unit minimum to add on Windows Autopilot services!



## Windows Autopilot Services at D&H

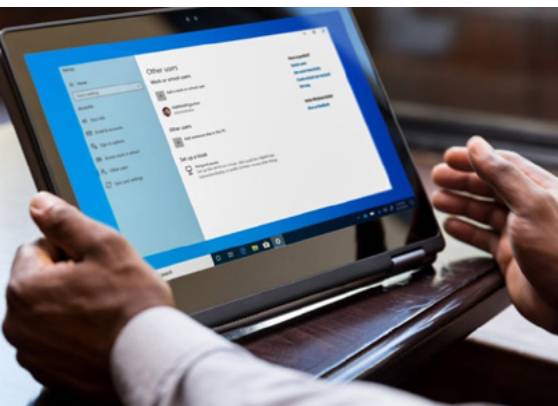
### Basic Data Capture

Data capture and Link various Windows 11 Pro devices to the appropriate end user tenant & profile via Partner Center with appropriate access.

D&H SKU: MSAPAZUREJOIN  
Cost per Device: \$4.00

D&H SKU: MSAPAZUREJOINLC  
Cost per Device: \$3.00\*

\*Discounted service when purchased with corresponding MS licensing - Data capture and Link various Windows 10 devices to the appropriate end user tenant & profile via Partner Center w/appropriate access



### Premium Provision

Data capture, Link + application downloads on various Windows 11 Pro devices to the appropriate end user tenant & profile via Partner Center with appropriate access.

D&H SKU: MSAPPROVISION  
Cost per Device: \$12.00

D&H SKU: MSAPPROVISIONLC  
Cost per Device: \$10.00\*\*

\*\*Discounted service when purchased with corresponding MS licensing - Data capture, Link + application downloads on various Windows 10 devices to the appropriate end user tenant & profile via Partner Center w/appropriate access



### Advance Data Capture

Data capture of Hardware Hash ID's on various Windows 11 Pro devices into .CSV file for Reseller or end user self-load via Partner Center.

D&H SKU: MSAPHASHCAP  
Cost per Device: \$15.00

D&H SKU: MSAPHASHCAPLC  
Cost per Device: \$13.00\*\*\*

\*\*\*Discounted service when purchased with corresponding MS licensing - Data capture of Hardware Hash ID's on various Windows 10 devices into .CSV file for Reseller or end user self-load via Partner Center

Contact [ProServices@dandh.com](mailto:ProServices@dandh.com) for more information on Windows Autopilot services at D&H!



# AIM SOLUTION ARCHITECTURE



D&H has developed our proprietary AIM Solution Architecture model to add value to every solution you offer your clients! By leveraging our (3) step process – **Assess, Implement, and Manage** – you’ll be empowered to craft solutions using a consultative approach. Wrap D&H professional and managed services around hardware to offer a consumption-based solution that enables your clients to grow along with you.

## ASSESS

Understanding your clients’ problem is a great first step, but finding the perfect solution for that issue can be a challenge.

This is where our team of experts will help you lean in and determine the best course of action through consultation, surveys, analysis, and testing.

## IMPLEMENT

Once you’ve identified the need, now is the time to find the perfect solution and help your clients implement that solution. By identifying software and professional services, you can add value for your clients and help them resolve complex issues.

## MANAGE

And finally, you should plan to support their business through Managed Services. By leveraging the As-a-Service model, you are enabling your clients to consume what they need, leading to higher profit margins and stronger recurring streams of revenue for your business.

### **VISIT OUR AIM MINI SITE TO LEARN MORE!**



Our free XaaS Solution Builders allow you to bundle hardware, software, and services into one solution, offering clients quotes in minutes!

### **LEVERAGE OUR XAAS SOLUTION BUILDER NOW!**

**Lenovo**

**Build Lenovo XaaS Solutions!**

**Microsoft Education**

**Build Microsoft EDU XaaS Solutions!**

**Microsoft Surface**

**Build Surface XaaS Solutions!**